

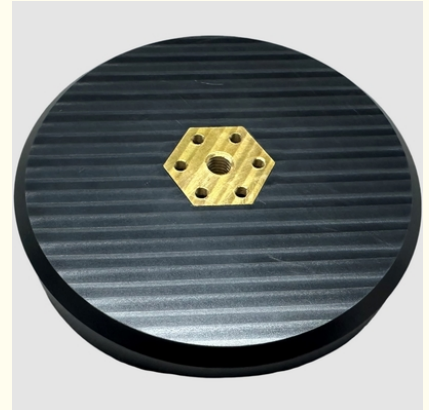


## Plastic CNC Machining ABS Enclosure Cover $\pm 0.01\text{mm}$ Tolerance CNC Machining Center

Our Product Introduction

### Basic Information

- Place of Origin: ABS, PC, PMMA, POM, PA, PTFE, PEEK
- Brand Name: China Shenzhen
- Certification: Polishing, Anodizing, Painting, Chrome Plating, Silkscreen
- Model Number: CNC Precision Machining
- Minimum Order Quantity: 1 piece
- Price: USD 50 piece
- Packaging Details: Carton, Plywood box
- Payment Terms: T/T, Paypal
- Supply Ability: 1 piece per day



### Product Specification

- Material: Plastic
- Surface: Painting, Printing
- Machining Type: CNC Machining Center
- Tolerance:  $\pm 0.01\text{mm}$
- Free Sample: Yes
- Packing: Customized Packing
- Payment: T/T, Western Union, Paypal
- Lead Time: 3-5 Days
- Highlight: **ABS Enclosure Cover, ABS CNC machining center, cnc plastic machining services**



for more products please visit us on [cncmachining-prototype.com](http://cncmachining-prototype.com)

## Product Description

### Understanding CNC Machining

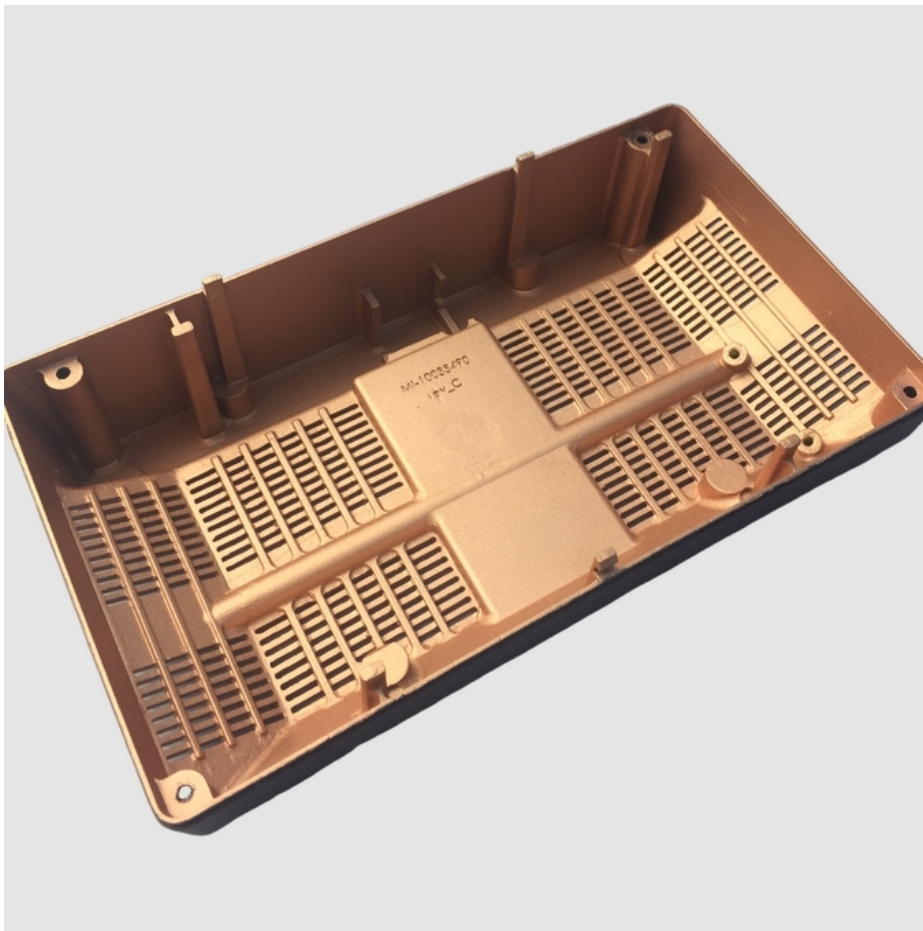
CNC machining stands for Computer Numerical Control machining, a method where computer-controlled machine tools precisely remove material from a workpiece. This computerized control results in faster, more precise, and accurate machining compared to conventional methods.

At Baranar Rapid, we utilize advanced equipment to provide a wide range of CNC machining services, including milling, turning, EDM, wire EDM, surface grinding, and more. Our imported 3, 4, and 5-axis CNC machining centers, operated by skilled machinists, can produce turned and milled parts using various plastic and metal materials. Additionally, our robust supply chain allows us to scale according to project requirements.



### Applications of CNC Machining

Our precision CNC machining services are employed in producing complex finished parts, components, and tools for plastic injection molding or pressure die casting. Additionally, CNC manufacturing is utilized for secondary operations such as drilling, tapping, and milling on machined parts or components from other processes. Among CNC machine tools, CNC mills are the most common and versatile multi-axis machines used in our daily operations at Baranar Rapid.



#### What Are the Different Types of Rapid Prototyping?

Prototypes can range from simple to complex, depending on how accurately they need to represent the intended final product. Low-fidelity prototypes may be crafted from basic materials like paper, plastic, modeling clay, styrofoam, or balsa wood. These models are inexpensive and quick to produce, serving primarily to provide a visual concept of the design and to facilitate size comparisons with other components.



### Inspections and Review for Every Stage of Production

To ensure quality from start to finish, Star Rapid provides the following inspection and review services:

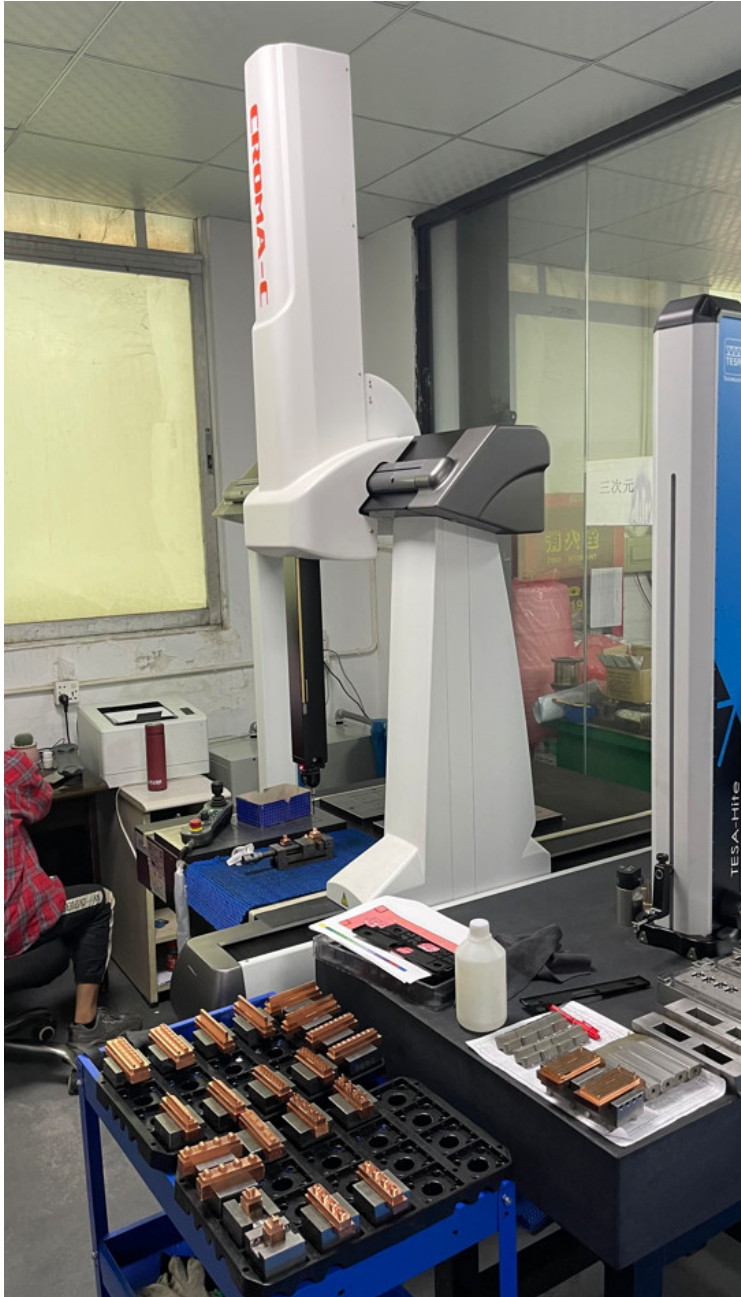
Extensive incoming materials verification

Design for manufacturing reviews for all quotes provided

Contract reviews upon receipt of POs

First article and in-process inspections

Final inspections and testing with reports and certifications as required



### Materials

We offer CNC machined prototypes and parts using a variety of materials sourced from the open market. Upon special request, we can also use specific materials provided by the client. Refer to our CNC machining materials table for a list of high-quality materials commonly used in our facilities.

Plastic	Acrylonitrile butadiene styrene	ABS
Plastic	Acrylonitrile butadiene styrene	ABS Hight Temp
Plastic	Acrylonitrile butadiene styrene	ABS Anti Static
Plastic	Acrylonitrile butadiene styrene + Polycarbonate	ABS + PC
Plastic	High-density polyethylene	HDPE, PEHD
Plastic	Nylon 6	PA6
Plastic	Nylon 6 + 30% Glass Fill	PA6 + 30% GF
Plastic	Nylon 6-6 + 30% Glass Fill	PA66 + 30% GF
Plastic	Nylon 6-6 Polyamide	PA66
Plastic	Polybutylene terephthalate	PBT
Plastic	Polycarbonate	PC
Plastic	Polycarbonate – Glass fill	PC + GF

Plastic	Polycarbonate + 30% Glass fill	PC + 30% GF
Plastic	Poly-ether-ether-ketone	PEEK
Plastic	Polyether-imide	PEI
Plastic	Polyethylene	PE
Plastic	Polyethylene terephthalate	PET
Plastic	Polymethyl methacrylate – acrylic	PMMA Acrylic
Plastic	Polyoxybenzylmethyleneglycolanhydride	Bakelite
Plastic	Polyoxymethylene	POM
Plastic	Polyphenylene sulfide	PPS
Plastic	Polyphenylene sulfide + Glass Fill	PPS + GF
Plastic	Polypropylene	PP
Plastic	Polytetrafluoroethylene	PTFE
Plastic	Polyvinylidene fluoride	PVDF



**Barana Rapid Technology Limited**

☎ 86 137 2889 6282

✉ [baranarm@baranarm.com](mailto:baranarm@baranarm.com)

🌐 [cncmachining-prototype.com](http://cncmachining-prototype.com)

RM502 Block B Floor 5th LiTong Semiconductor industrial park ShaPuWei Community SongGang Street Baoan  
District Shenzhen, Guangdong, China, ZipCode 518105